



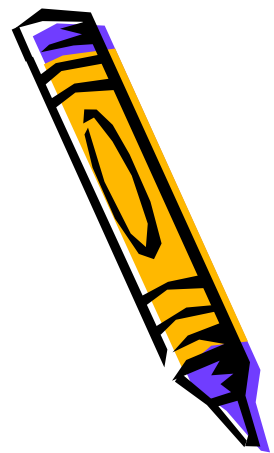
**Catonsville Elementary  
School**

Attendance Information



# Attendance

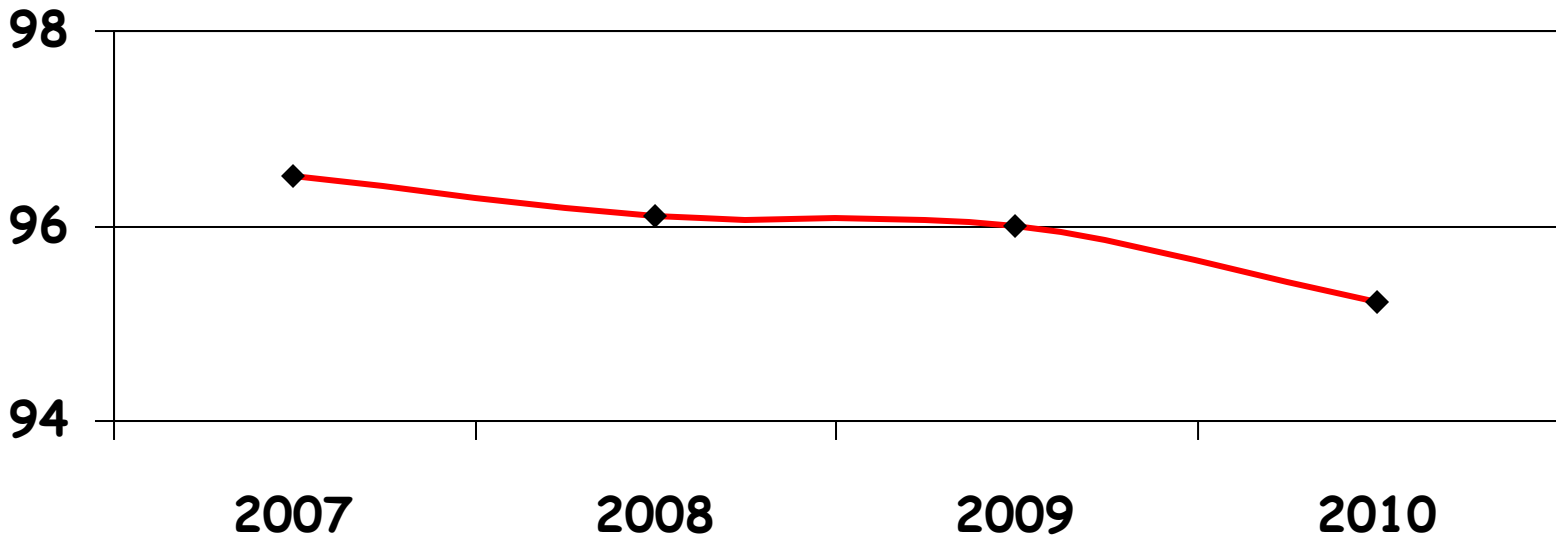
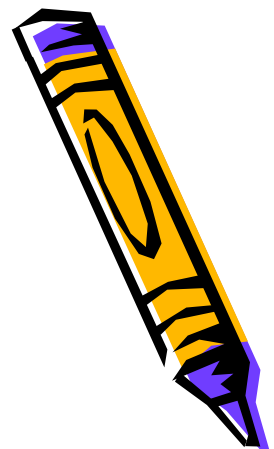
## Information



- MSDE Average Daily Attendance Rate Standard is 94%
- Standard must be met for C.E.S. to meet *Annual Yearly Progress*



# Attendance Over Time



◆ Attendance Rate



# Attendance

## Definitions

- Whole Day~ Student attends 4 or more hours
- Half Day~ Student attends 2 or more hours
- Many students often arrive late and/or leave early
- Students absent for more than 2 consecutive weeks (not related to illness) will be withdrawn



# Attendance

## MSDE Requirements

- MSDE Requires that parents submit a note explaining the reason for a student's absence
- Lawful Absence Reasons:
  - Death in the Immediate Family
  - Illness of the Student
  - Court Summons
  - Violent Weather
  - School Related or Approved Work
  - Observance of a Religious Holiday
  - State Emergency
  - Other Emergency
  - Suspension
  - Lack of Authorized Transportation

**\*VACATIONS ARE NOT CONSIDERED A LAWFUL ABSENCE!!\***



# Attendance

## The Effect of Attendance



- Absences (both excused and unexcused) and lateness may effect a student's **grade** performance and/or progress.
- Excessive absences/lateness may effect **performance** on state assessment.
- Excessive absences may effect a student's **preparation** for the next grade level.



# Attendance

## Make-Up Work

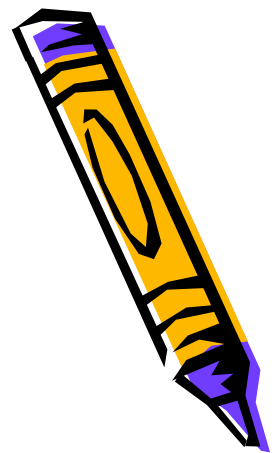


- **For Excused Absences:** Student will receive make-up work upon his/her return to school. A student has the same number of days to make up the work as he/she was absent. The make-up work will be graded.
- **For Unexcused Absences:** Student will receive make-up work upon his/her return to school. (Work will NOT be given prior to an absence.) A student has the same number of days to make up the work as he/she was absent. The make-up work **WILL NOT BE GRADED!** Additionally, tests and quizzes will be made up *upon the student's return to school.*



# Attendance

For Students with Attendance Concerns



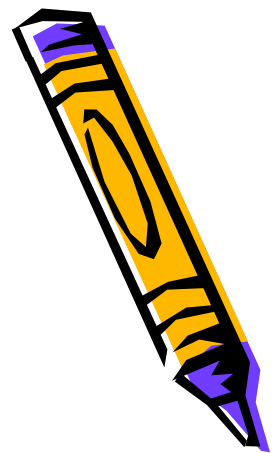
- Quarterly Letters to Parents
- Referral to Pupil Personnel Worker
- Referral to Student Support Team





# Attendance

## Attendance Recognition



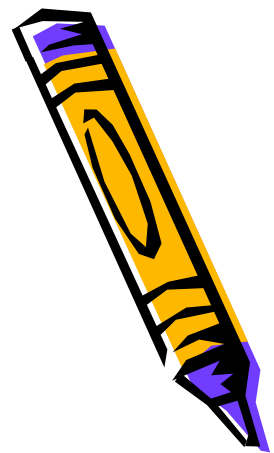
- **Gold** Level Award: 100% Attendance; No late arrivals/early dismissals
- **Silver** Level Award: 98% Attendance; No more than 3 late arrivals/early dismissals
- **Bronze** Level Award: 96% Attendance; No more than 5 late arrivals/early dismissals



# Attendance

## Possible Attendance Rewards

- Awards Assembly
- Certificates
- Celebration for Gold Level Students
- Reward Coupons
- Recognition Bracelets



It's Going to Be a  
**GREAT** Year!!

